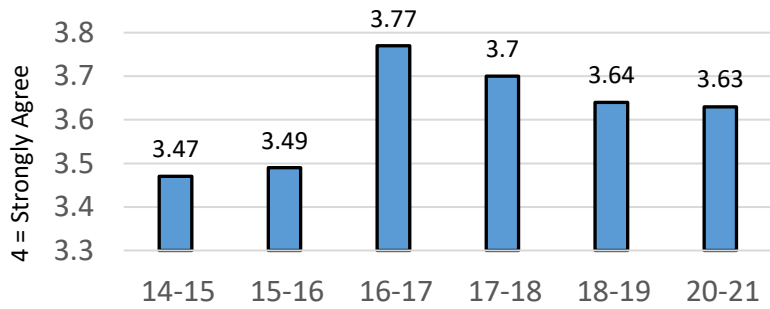
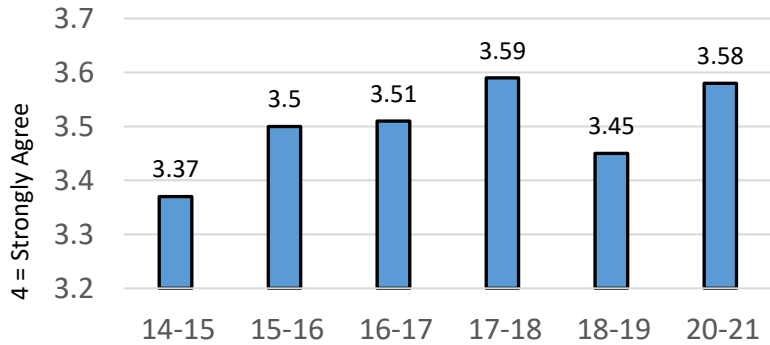


"My Treatment at CAPS Has Been Successful"



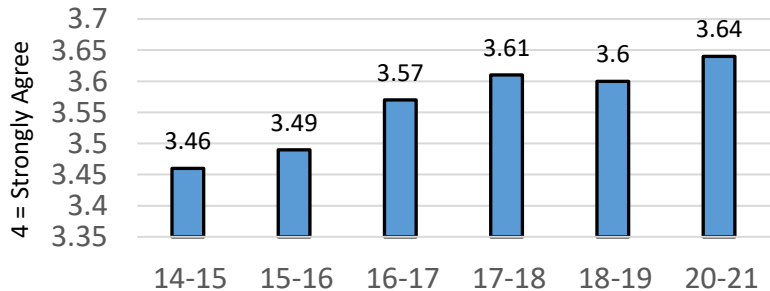
Survey sample sizes: 2014 = 40; 2015 = 42; 2016 = 44;
2017 = 42; 2018 = 72; 2020 = 160

"I Make Better Decisions"



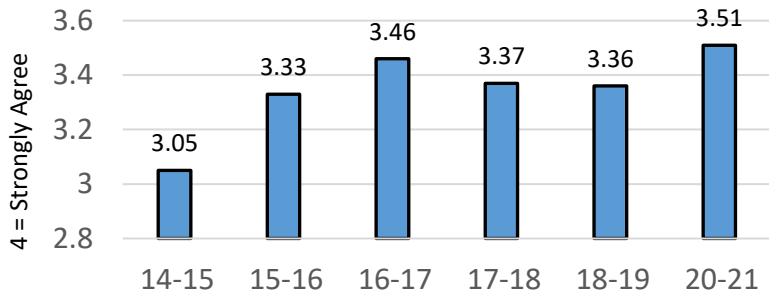
Survey sample sizes: 2014 = 40; 2015 = 42; 2016 = 44;
2017 = 42; 2018 = 72; 2020 = 160

"My Ability to Deal with My Problems Has Improved"



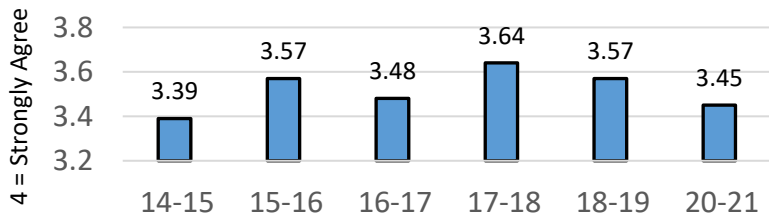
Survey sample sizes: 2014 = 40; 2015 = 42; 2016 = 44;
2017 = 42; 2018 = 72; 2020 = 160

"My Academic Performance Has Improved"



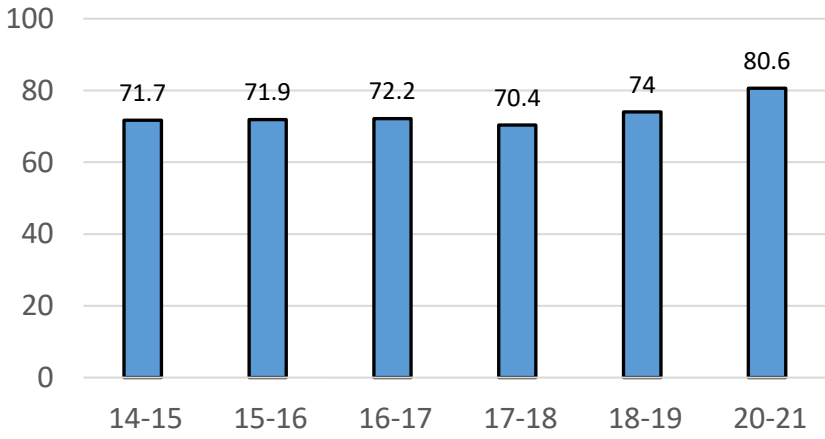
Survey sample sizes: 2014 = 40; 2015 = 42; 2016 = 44;
2017 = 42; 2018 = 72; 2020 = 160

"I am More Likely to Continue My Education at WSU as a Result of CAPS"



Survey sample sizes: 2014 = 40; 2015 = 42; 2016 = 44;
2017 = 42; 2018 = 72; 2020 = 160

Percent of Sessions Attended



Percent of "No-Shows"

